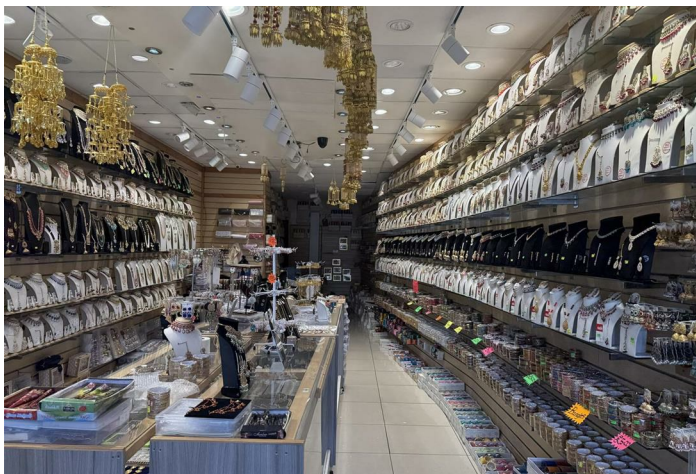




Soho Road

Birmingham

- Rent: £30,000 per annum
- Prime location on busy Soho Road
- Suitable for a variety of retail uses (subject to planning)
- Premium: £30,000 (for existing business – established cosmetic jewellery shop)
- Established trading position with excellent visibility
- Lease Terms: Flexible new lease available (terms to be agreed)



Local Authority **Birmingham**
Council Tax Band
EPC Rating

An excellent opportunity to acquire a well-positioned retail unit on the bustling Soho Road, in the heart of Handsworth, Birmingham. Currently operating as a cosmetic jewellery shop, the premises benefit from high footfall and strong local trade.

The ground floor comprises a bright and compact retail area (approx. 540 sq. ft.), ideal for continued retail use or similar business ventures. The first floor provides a spacious stock room with kitchen facilities, suitable for storage or staff use.

Rent: £30,000 per annum

Premium: £30,000 (for existing business – established cosmetic jewellery shop)

Lease Terms: Flexible new lease available (terms to be agreed)

Pam Estates Ltd Office

187 Rookery Road, Handsworth,
Birmingham, West Midlands, B21 9QZ

Contact

01215549990
info@pamestates.co.uk
<https://www.pamestates.co.uk/>

Agents Note: Whilst every care has been taken to prepare these particulars, they are for guidance purposes only. All measurements are approximate and for general guidance purposes only and whilst every care has been taken to ensure accuracy, they should not be relied upon and potential buyers/tenants are advised to recheck the measurements.